

*Title INFO list FIBERGLASS EELS by Sam Hersbach at Billytown*



Title Shark biting into deep sea submarine communication cable  
Material: colour pencil, printing paper, tape, telefoonduin nails, Plexiglas  
Size 30 x 40 cm (incl. Plexiglas)  
Year 2026  
Map number 1



Title Layered Helena  
Material: pigment, acrylic binder, gouache, acrylics, charcoal, black gesso, varnish, cotton.  
Size 140 x 170 cm  
Year 2026  
Map number 2



Title           Cornellia Scheffer-Lamme is great, idem Ary/Arij Scheffer  
Material:     graphite, colour pencil, ink, printing paper, Plexiglass, telefoonduin nails  
Size           30 x 40 cm (incl. Plexiglass)  
Year          2026  
Map number   3



Title           Hoekkijkende vampieren tand verwarring  
Material:     graphite, tape, printing paper, Plexiglass, telefoonduin nails  
Size           30 x 40 cm (incl. Plexiglass)  
Year          2026  
Map number   4



Title           Schaal in plek (Clone Drawing Series)  
Material:     Colour pencil, tape, printing paper, Plexiglass, telefoonduin nails  
Size           30 x 40 cm (incl. Plexiglass)  
Year          2026  
Map number   5



Title Billytown Atelier Portray  
Material: Gouache, black gesso, pigment, acrylic binder, acrylics, charcoal, varnish on cotton  
Size 35 x 40 cm  
Year 2026  
Map number 6



Title Endless information (mixture of Billyt-Spaces), shelving, minds and round table meeting  
Material: Gouache, black gesso, pigment, acrylic binder, acrylics, charcoal, varnish on cotton  
Size 30 x 40 cm  
Year 2026  
Map number 7



Title From the Sky to the Ground

Material: Glass, printing paper, graphite, 'telefoonduin' nails, screws (because I was nervous it would fall), plexiglass  
Size 30 x 51 cm cm  
Year 2026  
Map number 8



Title The Snail Bought a Submarine  
Material: Pigment, acrylic binder, acrylics, crayon, black gesso, charcoal, cotton, varnish  
Size 230 x 200 cm  
Year 2026  
Map number 8



Title HELMGRAS (Ammophila arenaria)  
Material: Helmgras (Ammophila arenaria), dibond, tin sculpture, earth, screws, stained glass, wood, black gesso, water resistant sealing  
Size 94 x 30 x 80 cm  
Year 2026  
Map number 10



Title Encounter (Most paintings are made with pigment paint)  
Material: pigment, acrylic binder, gouache, acrylics, black gesso, charcoal, varnish on cotton  
Size 130 x 100 cm  
Year 2026  
Map number 11



Title De Helena  
Material: Metal (Alu), acrylic, printing paper, graphite, screws, varnish, pigment paint, acrylics, tape  
Size 25 x 50 cm  
Year 2026  
Map number 12



Title Catfish (Drawing Behind Plexiglass Series)  
Material: printing paper, colour pencil, plexiglass, telefoonduin nails,  
Size 30 x 40 cm (incl. Plexiglass)  
Year 2026  
Map number 13



Title Submerge  
Material: Dibond, linen, pigment, acrylic binder, screws and attachments, gouache, varnish on linnen  
Size 100 x 80  
Year 2026  
Map number 14



Title Deepsea Submarine Communication cable (Blooming Information)  
Material: Pigment, acrylic binder, charcoal, gouache, acrylics, crayon, varnish on cotton  
Size 130 x 100 cm  
Year 2026  
Map number 15



Title Omarmrijkelijke TweeKijks  
Material: Pigment, acrylic binder, charcoal, black gesso, gouache, acrylics, crayon, varnish on cotton  
Size 130 x 100 cm  
Year 2026  
Map number 16



Title *I hope this email finds you well*  
Material Dibond, pigment, acrylic binder, gouache screws, varnish on cotton  
Size 140 x110 cm  
Year 2026  
Map number 17



Title *Between the Mountains Lays the Fiberglass Hug*  
Material Pigment, acrylic binder, black gesso, tempera, acrylics, charcoal, varnish on cotton  
Size 230 x 200 cm  
Year 2026  
Map number 18



Title The Dove Dove into the Lake... Found the Archive, Dove Dove Lake, Accumulating Waters (Balcony at Como) Siegelaub Series  
Material Pigment, acrylic binder, black gesso, acrylics, charcoal, varnish on cotton  
Size 30 x 40 cm  
Year 2023 / 2-24  
Map number 19



Title The Billy-Windows embrace the sun  
Material Painting, Helmgrass (*Ammophila arenaria*), Festuca Glauca, dibond, tin sculpture, earth, sticker, screws, container, wood, lose steel elements  
Size 61 x 40 x 110 cm  
Year 2026  
Map number 20



Title *Community Practice*  
Material steel plates, stickers, crayon, pigment, acrylic binder, black gesso, gouache, varnish, screws on cotton  
Size 150 x 95 cm  
Year 2026  
Map number 21



Title Bloemen tekening  
Material 320 gsm paper, gouache, black gesso, pigment and acrylic binder, charcoal, acrylics, varnish, plexiglass, telefoondruim nails  
Size 40 x 30 cm (incl. Plexiglass)  
Year 2026  
Map number 22



Title           Sharking Nibble 1  
Material       Acrylics, pigment and acrylic binder, black gesso, charcoal, varnish, on cotton  
Size           90 x 50 cm  
Year           2026  
Map number   23



Title           Shark bite 1  
Material       Acrylics, pigment and acrylic binder, black gesso, charcoal, varnish, on cotton  
Size           90 x 50 cm  
Year           2026  
Map number   24



Title Shark bumping into something (for the shark) new 1  
Material Acrylics, tape, pigment and acrylic binder, black gesso, varnish, on cotton  
Size 90 x 50 cm  
Year 2026  
Map number 25



Title Crawler  
Material Acrylics, pigment, acrylic binder, charcoal, black gesso, gouache, varnish on cotton  
Size 90 x 50 cm  
Year 2026  
Map number 26



Title Double Bloomed  
Material Acrylics, pigment, acrylic binder, charcoal, black gesso, gouache, varnish on cotton on cotton  
Size 130 x 100 cm  
Year 2026  
Map number 27

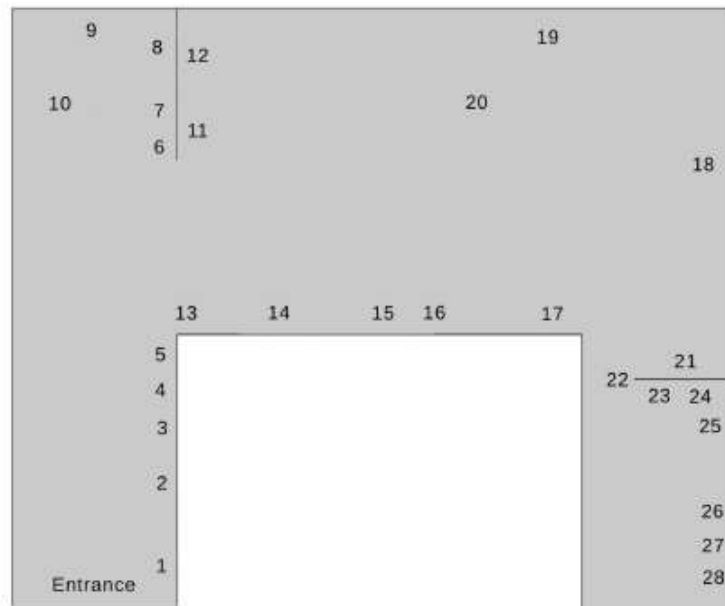


Title  
Material Metal plate, screws, photo transfer, acrylics, pigment, acrylic binder, charcoal, black gesso, gouache, varnish on cotton  
Size 140 x 70 cm  
Year 2024  
Map number 28

# Fiberglass Eels

Sam Hersbach

13.03.26–25.04.26  
solo exhibition



1. *Shark biting into deep sea submarine communication cable*
2. *Layered Helena, periscope encounter*
3. *Cornellia Scheffer-Lamme is great, idem Ary/Arij Scheffer*
4. *Hoekkijkende vampieren tand verwarring*
5. *Schaal in plek (Clone Drawing Series)*
6. *Billytown Atelier Portray*
7. *Endless information (mixture of Billy-Spaces), shelving, minds and round table meeting*
8. *From the Sky To the Ground*
9. *The Snail Bought a Submarine*
10. *HELMGRAS (Ammophila arenaria)*
11. *Encounter (Most paintings are made with pigment paint)*
12. *De Helena*
13. *Catfish (Drawing Behind Plexiglas Series)*
14. *Submerge*
15. *Deepsea Submarine Communication Cable (Blooming Information)*
16. *Omarmrijkelijke TweeKijks*
17. *I hope this email finds you well*
18. *Between the Mountains Lays the Fiberglass Hug*
19. *The Dove Dove into the Lake... Found the Archive, Dove Dove Lake, Accumulating Waters (Balcony at Como) Siegelaub Series*
20. *The Billy-Windows embrace the Sun*
21. *Community Practice*
22. *Bloemen tekening*
23. *Sharking Nibble 1*
24. *Shark bite 1*
25. *Shark bumping into something (for the shark) new 1*
26. *Crawler*
27. *Double Bloomed*
28. *Steel Pearl Don't Swirlllll, said the submarine to the Sea Sight*

Fiberglass Eels  
Sam Hersbach

13.03.26–25.04.26  
solo exhibition

The exhibition *Fiberglass Eels* brings together a selection of recent works by Sam Hersbach. For this presentation, Hersbach has created an interrelated body of work in which deep-sea submarine communication cables recur alongside floral elements, human and non-human fantastical figures, drones (both those acquired by the Dutch government and consumer drones), and historical references that include portraits. Cultural spaces, such as meeting rooms of both institutions that provide art subsidies and of self-run artist initiatives, appear next to microbes, systems of measurement and scale, submarines colliding beneath the surface, and restless catfish.

The characters, narrative elements, and references in Hersbach's works start at a material base. Recently, Hersbach has conducted research into creating his own pigments, which he has used in these paintings. Hersbach is interested in the emotional and associative qualities of pigment, and in how these are embedded in the materials. The pigments are derived from flowers that were given as a present, found or collected from overlooked environments, such as weeds growing between pavement tiles or plants like marram grass that help protect the dunes and land from rising sea levels. A series of sculptures made from stained glass function as carriers in which the plants can grow alongside their pigment-made counterparts, who have been transformed into an image frozen into painting.

*Fiberglass Eels* embeds photographic elements and industrial materials, such as steel plates, into paintings to reveal the relationship between technology, nature and human systems in a layered manner, showing how they physically and ideologically nestle themselves in the world.