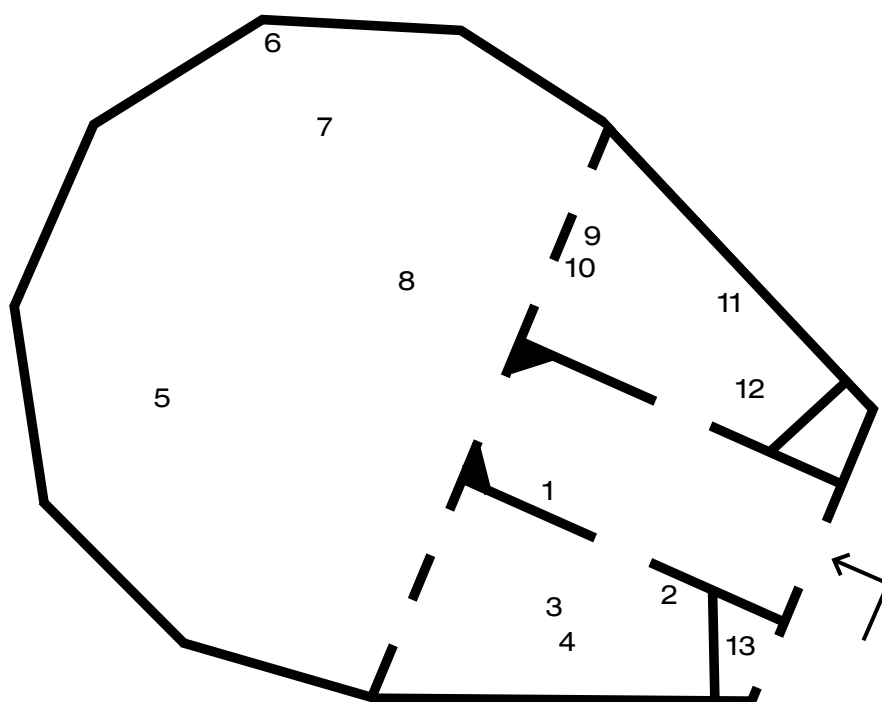


Manual (in absence of handles)
by Simon Delobel & the artist

1. Something is already happening.
Even before you entered.
2. Thirteen presences, one echo.
Stay a minimum of 33 minutes if you want to hear the sound piece.
Time is part of the work.
3. Read, if you like,
on the back of this page.
The titles.
The materials.
4. What did the room withhold,
before you knew its names.
5. Hiss with the axe.
6. Memory is not archival.
It's tactile. Skeletal. Partial.
7. Look up bird's-eye maple veneer.
Search for exposed aggregate concrete.
8. Some materials resist transformation.
Others perform it.
Protection, too, is a kind of surface.
9. Which parts are decorative?
Which are structural?
10. Some habits are weapons.
Some surfaces remember pressure.
11. Now, notice the threshold.
It may feel like a door.
Or a question.

Thanks to Markus Tschigge, Stefan Pedersen, Gabriel Huth, Andreas Dvořák, Markus Eberhart, Marlene Eberhart, Ruth Eberhart, Andreas Erstling, Kris Pint, Maria Gil Ulldemolins, Thomas Hitchcock, Austrian Cultural Forum, Land Steiermark, Simon Delobel, Megan Briggs, Thomas Peeters, Sam van Ingelgem, Sara Plantefève-Castrick, Arno De Meyer, Isabelle Arthuis, Brenda Guesnet, Jakub Čevela, the KIOSK Saviours and the whole team of KASK & CONSERVATORIUM School of Arts Ghent.





1. *The R Will Not Be T*, 2025
Three-layer solid wood panel (spruce), bird's eye maple veneer, wachs, 125 × 84 × 2 cm
2. *Or V*, 2025
Three-layer solid wood panel (spruce), stained bird's eye maple, oil, 109 × 85 × 2 cm
3. *Hiss of the Axe*, 2025
Steel, bent, hammered, bird's eye maple veneer, quartz stone, screws, 430 × 50 × 165 cm
4. *Year of the Snake*, 2025
Lacquer paints, metal, epoxy, bird's eye maple veneer, oil, 50 × 90 × 53 cm
5. *Repentance*, 2025
Exposed aggregate concrete, river pebbles, quartz stone, steel, 300 × 100 × 50 cm
6. *Penance*, 2025
Wood, amulet, brass, 50 × 9 × 9 cm
7. *Holder (Many Men Have Tried)*, 2021
Plaster, pigment, 50 cm × 30 cm × 23 cm

Veneered Plinth, 2025
MDF, bird's eye maple veneer, 100 × 30 × 30 cm
8. *Holz Her*, 2025
Holz Her Machine, added steel in bird's eye maple veneer, sandstone, spruce, glue, 205 × 200 × 96 cm
9. *Devotion*, 2025
Three-layer solid wood panel (spruce), bird's eye maple veneer, oil, 53 × 30 × 12 cm
10. *Prince in Split Werkbank*, 2025
Split used planer's bench, Prince matchbox, 130 × 64 × 12 cm
11. *Fer de Rabot (Eisen des Hobels)*, 2025
Three-layer solid wood panel (spruce), bird's eye maple veneer, two used planer blades, oil, 21 × 15 × 2 cm
12. *Untitled (Her Holz)*, 2025
Metal, three-layer solid wood panel (spruce), bird's eye maple veneer, oil, 33 × 45 × 36 cm

Veneered Plinth, 2025
MDF, bird's eye maple veneer, 100 × 30 × 30 cm
13. *Love of the Wolf*, 2025
Three-layer solid wood panel (spruce), various veneer, oil, 30 × 42 cm

Es bellen die Hunde, 2025
Sound piece, 1:30 min, played every 33 minutes

Supported by:

